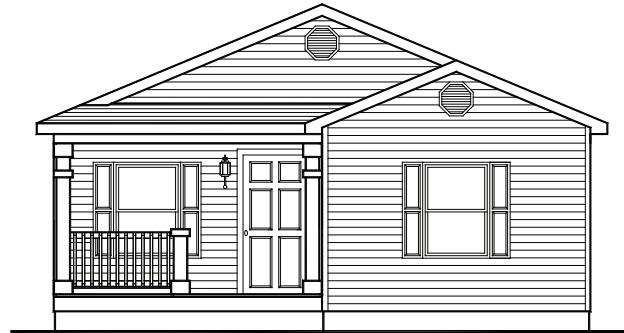
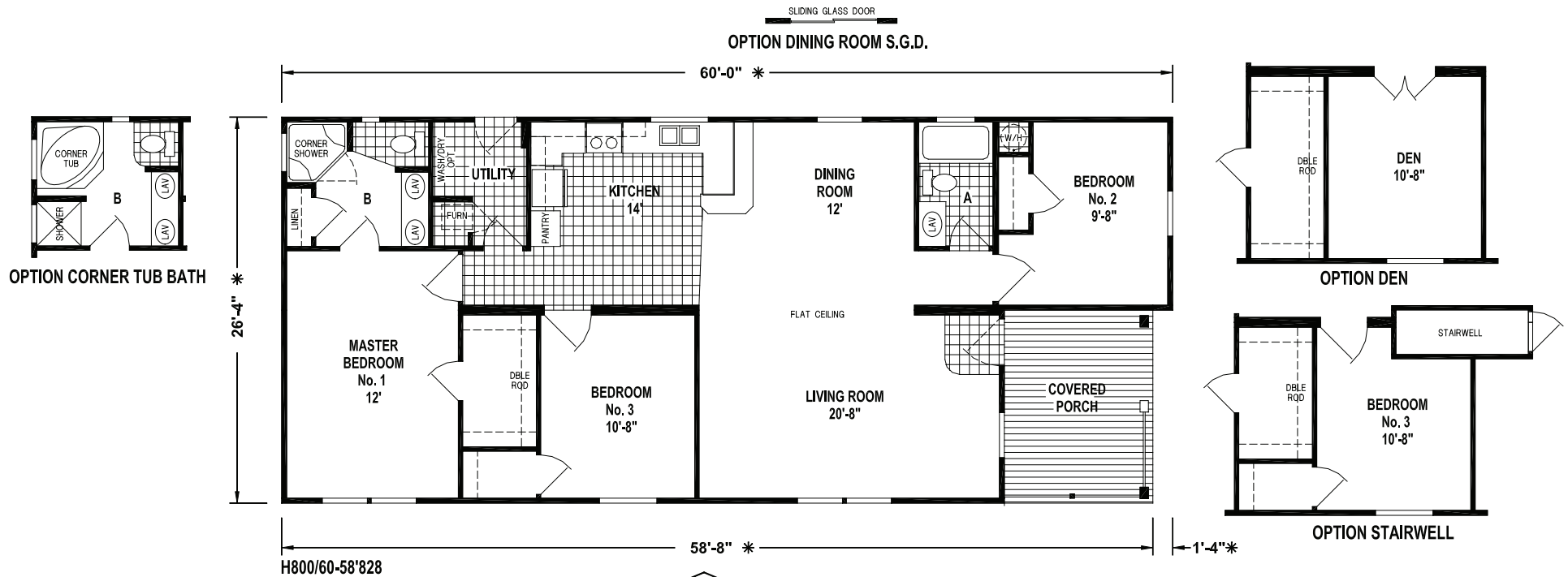


The Kennedy - Model #H800

Wood Manor Series



Key Features & Model Information:

Approx. 1,430 Square Feet
 3 Bedrooms/2 Baths
 Walk in Master Closet and Storage

Snack Bar Kitchen
 Private Bedroom Arrangement
 ½" Drywall Throughout

SKYLINE[®]

BRINGING AMERICA HOME. BRINGING AMERICA FUN.

Visit us at our web site at www.skylinecorp.com

Skyline Wood Manor

Standard Features

LIVING AREAS

- Carpet
- Drapes w/Mini Blinds
- Dining Light

KITCHEN

- Drawer Over Door Base Cabinet Construction
- Oak or Maple Raised Panel Cabinet Doors & Faceframe w/Residential Hidden Hinges
- Lined Overhead Cabinets w/Adjustable Shelves
- One (1) Row Ceramic Tile Backsplash
- Valance w/Mini Blinds
- Stainless Steel Sink w/Single Lever Faucet & Sprayer
- 18 Cu. Ft. Double Door Frost Free Refrigerator
- 30" Gas Range w/Lighted Power Hood
- Pantry w/Drawer Bank Per Floor Plan
- Lined Base Cabinets Throughout
- Cabinet Above Refrigerator

BATHROOMS

- Decorative Mirror
- Privacy Locks
- Oak or Maple Flat Panel Cabinet Doors & Faceframe w/Residential Hidden Hinges
- 1-Piece Fiberglass Tub/Shower Combo — Hall Bath
- Power Vent Fan

- Lav Drawer Bank per Floor Plan
- China Sink w/Over Flow & Pop-Up Drain
- Elongated China Commodes
- Residential Raised Lav Base in Master Bath
- One (1) Row Ceramic Tile Backsplash
- Linen w/Drawer Bank Per Floor Plan
- Towel Bar & Tissue Holder

BEDROOMS

- Carpet
- Valance w/Mini Blinds
- Ventilated Wire Shelving

ADDITIONAL FEATURES

- Flat Ceiling Throughout
- Textured Ceiling
- Shingle Roof w/Roof Vent
- 5/12 Roof Pitch
- 30 Year Architectural Shingles
- Hip Roof Over Porch
- Vinyl Double 4 Lap Siding
- 3/8" OSB Siding Underlayment
- Ceramica Tile at Entry
- 1/2" Tape & Textured Drywall Throughout
- Carpet Pad
- Carpet in Hall

- Pre-finished Door Jambs
- Lever Latch Door Handles
- Gas Furnace w/Metal Door
- 40 Gal. Electric Water Heater
- Water Shut Off Valves at All Fixtures
- Plumb for Washer
- Wire for Dryer
- Cottage 9-Lite Rear Door (Thermal)
- 6-Panel Front Door
- Deadbolt Front & Rear Door
- Single-Hung Windows
- Insulated Vinyl Windows w/Low "E" Glass
- Window Grids
- Egress Windows in Bedrooms
- Shutters at Doorend
- 200 Amp Service Entrance
- 8'-0" Sidewall Height
- 2 x 6 Sidewall, 16" O.C.
- 2 x 6 Floor Joists, 16" O.C.
- Graduated Fiberglass Heat Duct
- Perimeter Heating w/Baseboard Registers
- Toekick Registers at Kitchen & Bathrooms
- Copper Wiring
- Smoke Detector w/Battery Backup & False Alarm Control
- Exterior Receptacle w/GFI Breaker
- Exterior Frost-Free Faucet
- Electrical Breaker Box
- Code Insulation
- Exterior Light at All Exterior Doors
- Iron Gas Piping w/Shut-off Valves

ADDITIONAL MEADOWS OF CHANTILLY FEATURES

- 22 Cu. Ft. Double Door Frost Free Refrigerator
- Garbage Disposal
- Washer & Dryer Installed



For your comfort and safety, Skyline home designs are approved and inspected for conformance to Federal standards.

* Dimensions stated to industry standards. Width and length dimensions are nominal and are not to be used for setup of home on site; consult selling retailers for exact specifications. Overall length does not include approximately four foot hitch. The square footage is approximate and based upon nominal exterior floor size. Room sizes are measured from floor ends and wall centers.

Because of progressive product improvement, all prices & specifications are subject to change without prior notice or obligation to Skyline Corporation.

Your Retailer, an independent contractor, who is not an agent of Skyline Corporation, is the party responsible for your purchase contract and any additions, deletions, alterations, or attachments made to or in your home.

SKYLINE®

BRINGING AMERICA HOME. BRINGING AMERICA FUN.

Visit us at our web site at www.skylinecorp.com