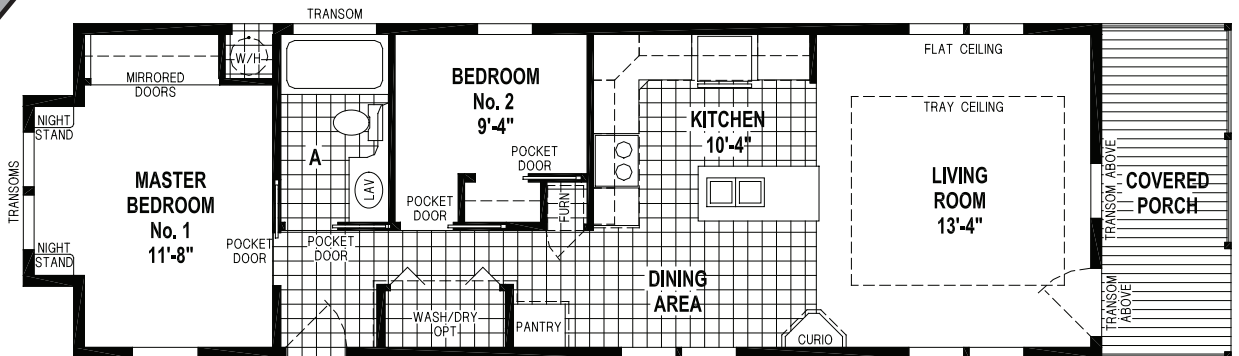


# The Meadows of Chantilly

featuring the 16 Tanglewood Park Series



H600D/5416 (759 SQ. FT.) - 2BEDROOM

## HIGHLIGHTS

- 9' - Sidewalls (2x6) w/Flat Ceiling
- Painted Drywall Interior Walls
- Upgrade Moulding Throughout
- Anchorage II Carpet & Ceramica Floor Tile
- Decorative Window Coverings w/2 Blinds
- Cherry Kitchen Cabinets w/Granite Tile Countertops, Edge & Backsplash
- Stainless Steel Appliances
- Upgrade Lighting & Paddle Fans
- Cherry Raised Lav Base w/Ceramic Tile Edge & Backsplash
- Architectural Shingles w/Hip Roof at Porch
- Decorative Porch Columns w/Vinyl Decking & Railings
- Exterior Steel Doors w/Glass Inserts or Sliding Glass Door



**SKYLINE**<sup>®</sup>

BRINGING AMERICA HOME. BRINGING AMERICA FUN.

# Tanglewood Park Series

## Standard Features 16 Series

### Exterior

- 9' Sidewall w/2x6 Construction
- 2x8 Floor Joists
- Lap Siding & OSB Backer
- Architectural Shingles — 30 Year
- Hip Roof at Porch
- Vinyl Decking w/Decorative Columns & Vinyl Railings
- Steel Front Door w/Arch Top Glass & Dead Bolt
- Steel Rear Door w/Nine-Lite Glass & Dead Bolt
- Transom Above Front Door
- Insulation; R-21 Floor, R-19 Wall, R-19 Ceiling

### Interior

- ½" Painted Dry Wall Throughout (Except Wardrobes)
- Designer Window Coverings w/2" Blinds
- Anchorage II Carpet w/6# Carpet Pad & Tack Strip
- Ceramica Floor Tile in Kitchen & Bath
- Upgrade Trim Throughout
- 8' Tall Pocket Doors
- Bed Bay w/Transom Windows — Master Bedroom
- Tray Ceiling w/Accent Paint in Living Room

### Cabinetry

- Cherry Cabinet Doors w/Hardware
- Granite Tile Countertop/Back Splash & Edge — Kitchen
- Drawer over Door Base Cabinet — Kitchen
- Ceramic Tile Edge & Back Splash — Bath
- 36" Tall Vanity Base w/Drawer Bank
- Night Stands w/Laminate Top — Master Bedroom
- Wardrobe w/Drawers Below & Mirrored Doors — Master Bedroom

### Appliances

- Stainless Steel Appliances
- 18 cu. ft. Refrigerator
- Deluxe Gas Range
- Microwave Range Hood
- Dishwasher w/Water Filtration
- Garbage Disposal

### Electrical

- 200 amp Electrical Service
- Upgrade Lighting Throughout
- Recessed Can Lights at Soffit — Kitchen
- Carriage Lights at Exterior Doors
- Paddle Fan w/Light at Porch
- Paddle Fan w/Light at Master Bedroom & Living Room
- Recessed Can Lights at Living Room Tray Ceiling
- Wire for Dryer
- Arm Lights at Night Stands in Master Bedroom
- Strip Light in Bathroom
- Recessed Can Light Over Tub
- Phone Jack — Living Room/Master Bedroom
- TV Jack — Living Room/Master Bedroom

### Plumbing & Heating

- Stainless Steel Sink w/Single Lever Waterfall Faucet & Sprayer
- 60" Fiberglass Tub w/Ceramic Tile Walls & Clear Tempered Glass Doors
- China Sink w/Upgrade Dual Handle Faucet
- Elongated Toilets w/Shut-Off Valve
- Water Shut-Off Valve at Main
- Plumb for Washer
- Exterior Faucets (2)
- Gas Furnace w/Metal Door
- Perimeter Heat Ducts w/Toekick Registers at Kitchen & Bath
- 30 Gallon Electric Water Heater — Dual Element



**SKYLINE**<sup>®</sup>

BRINGING AMERICA HOME. BRINGING AMERICA FUN.

Visit us at our web site at [www.skylinecorp.com](http://www.skylinecorp.com)



For your comfort and safety, Skyline home designs are approved and inspected for conformance to Federal standards.

\* Dimensions stated to industry standards. Width and length dimensions are nominal and are not to be used for setup of home on site; consult selling retailers for exact specifications. Overall length does not include approximately four foot hitch. The square footage is approximate and based upon nominal exterior floor size. Room sizes are measured from floor ends and wall centers.

Because of progressive product improvement, all prices & specifications are subject to change without prior notice or obligation to Skyline Corporation.

Your Retailer, an independent contractor, who is not an agent of Skyline Corporation, is the party responsible for your purchase contract and any additions, deletions, alterations, or attachments made to or in your home.